

Contents

PART 1 INTRODUCTION

Chapter 1 Introduction to Plant Biology 1

1.1 What are plants and microbes? 1

- A definition of plants can include adaptation to life on land 2
- What are microbes, and how are they important to plant life? 4
- All of Earth's life-forms are related 4

1.2 People use plants and microbes in many ways 4

1.3 Plants and microbes play essential roles in maintaining Earth's environment and life-forms 8

- Plants and microbes help maintain Earth's atmospheric chemistry and climate 9
- Plants, microbes, and other organisms benefit from close associations 9
 - Food webs* 9
 - Beneficial symbioses* 9
 - Coevolution* 12

Essay **1.1** Devilish Dodder 2

Essay **1.2** Global Warming: Too Much of a Good Thing 10

Highlights 13 Review Questions 13 Applying Concepts 13

Chapter 2 Plants and People 14

2.1 Ethnobotany and economic botany focus on human uses of plants 15

2.2 The origin of agriculture was key to development of civilizations 16

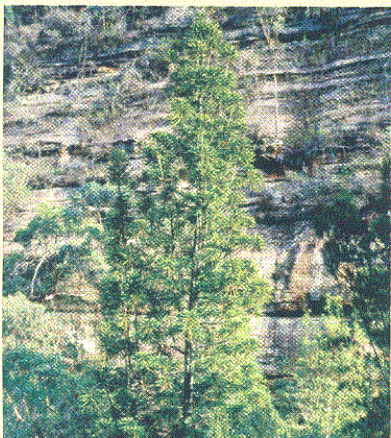
- How can we know something about the origins of agriculture? 16
- When and how did agriculture originate? 17
- How did agriculture affect the rise of human civilizations? 17
- Where were plants first domesticated? 18
- Ecological adaptations are responsible for the useful features of cereals and legumes 18
- How were cereals and legumes domesticated? 19

2.3 Food plant genetic resources and traditional agricultural knowledge need to be preserved 21

2.4 Plant secondary compounds are important to humans and the ecology of plants 22

- Major types of plant secondary compounds are terpenes and terpenoids, phenolics, and alkaloids 25
 - Terpenes and terpenoids* 26
 - Phenolics, including flavonoids* 26
 - Alkaloids* 27





Essay **2.1** Ethnobotany: Seeds of Culture 17

Essay **2.2** Seed Banks: Saving for the Future 23

Highlights 28 Review Questions 28 Applying Concepts 29

Chapter 3 Naming and Organizing Plants 30

3.1 Scientific names are essential in agriculture, commerce, medicine, and ecology 31

Scientific names are more accurate than common names 31

Scientific names originated with Linnaeus, the father of biological taxonomy and systematics 32

Each kind of organism has a unique scientific name 33

Scientific names are structured to provide useful information 33

There is a correct way to write scientific names 35

Plant names signify subspecies, varieties, or cultivars 35

Hybrids have distinctive scientific names 36

Naming new plants must follow an established procedure 37

3.2 Herbaria are collections of plant specimens that have been expertly identified 37

Plant collections can be stored as herbarium specimens 37

Resources for identifying plants include identification keys 39

3.3 Plants and other organisms are classified according to their relationships 39

Species can be grouped into species complexes, genera, families, orders, classes, phyla, and domains 40

Plant classifications change as new discoveries are made 43

Essay **3.1** Botanical Gardens: Science and Art All in One! 38

Essay **3.2** Comprehending Cladistics 42

Highlights 43 Review Questions 44 Applying Concepts 45

PART 2 MOLECULES, CELLS, AND MICROBES

Chapter 4 Molecules of Life 46

4.1 All physical matter is made up of elements composed of distinct atoms 47

Plants contain and require more of some elements than others 48

Atoms are made up of three subatomic particles: protons, neutrons, and electrons 49

Every element has an atomic number and a mass number 50

4.2 Several types of bonds link atoms to form molecules 50

Ionic bonds form when atoms gain or lose electrons 50

- Acids and bases contain ionic bonds 51
- In covalent bonds, two or more atoms share electrons 51
- Hydrogen bonds are weak attractions between molecules 52

4.3 Water has unique properties because it forms hydrogen bonds 52

4.4 Four types of primary compounds are the molecules of life 53

- Carbohydrates include sugars, starches, and cellulose 53
- Lipids include fats, oils, waxes, phospholipids, and steroids 55
- Proteins are large molecules composed of amino acids 59
 - Storage proteins are important in human nutrition* 61
 - Enzymes are proteins that act as biological catalysts* 61
- Nucleic acids such as DNA and RNA are composed of nucleotides 62

Essay 4.1 Molecules: Keys to the Search for Extraterrestrial Life 48

Essay 4.2 Plants: A Vitamin Gold Mine 62

Highlights 64 Review Questions 64 Applying Concepts 65

Chapter 5 The Origin of Life and the Scientific Method 66

5.1 Life is difficult to define 67

5.2 Why does life occur on Earth? 69

- The Earth's position in space is important to life 69
- Early life made the environment more suitable for life 69

5.3 When did the Earth form, and when did life first appear? 70

- The age of the Earth is about 4.6 billion years 70
- A period of bombardment preceded the establishment of life 71

5.4 The scientific method has revealed many aspects of the origin of life 71

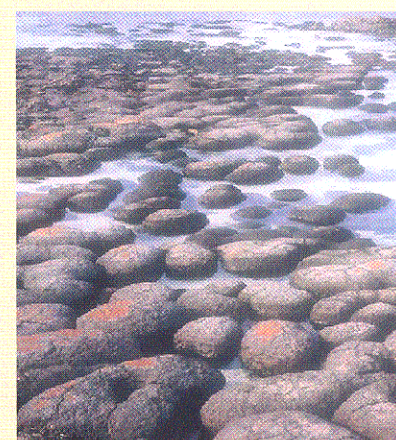
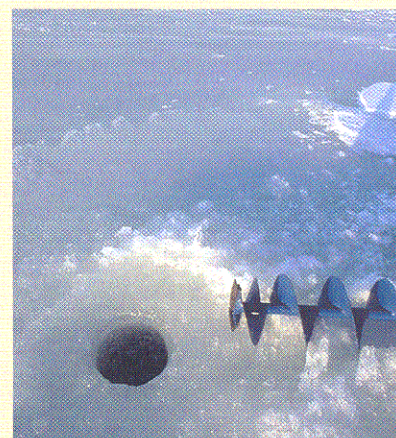
- The nature of science is empirical 72
- Science has an error-correction capacity 73
- The process of science may be inductive or deductive 73
- The Martian meteorite provides an example of the scientific process 74
 - Evidence of microbial life* 74
 - The value of understanding the scientific process* 75

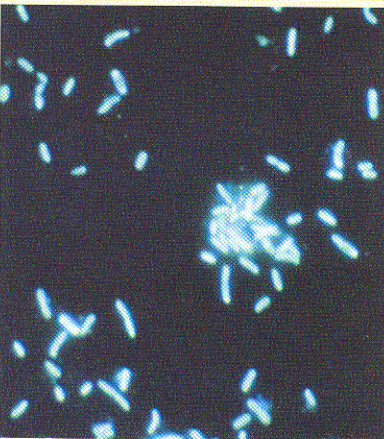
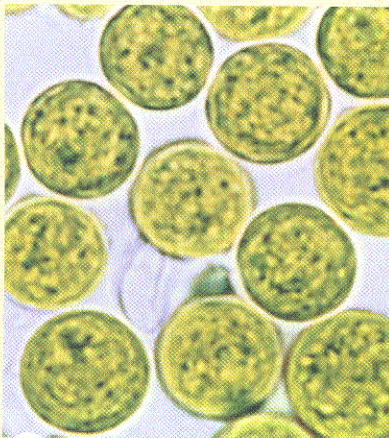
5.5 How did life originate? 75

- The chemical-biological theory regards the origin of life as a series of stages 75
- Organic compounds can be formed from inorganic molecules 75
- Macromolecules can form from simple organic compounds 76
- Macromolecules in water can form cell-like structures 76

Essay 5.1 Properties of Living Organisms 68

Highlights 77 Review Questions 77 Applying Concepts 77





Chapter 6 Prokaryotes, Earth's Oldest and Simplest Life-Forms 78

6.1 The Earth's microbes include the prokaryotes—Bacteria and Archaea 79

Prokaryotes have simpler cells, bodies, and reproduction than eukaryotes 79
 Bacteria and Archaea are distinguished primarily by DNA 80

6.2 Prokaryote structure, behavior, and reproduction are important in identification and function 80

Prokaryotic size and body shape diversity is limited 80
 Some prokaryotes can swim or glide 81
 Slimy polysaccharides often coat prokaryote surfaces 82
 Prokaryote cell walls differ in structure and chemistry 82
Peptidoglycan forms part of bacterial, but not archaean cell walls 82
The Gram stain is useful in describing bacteria and predicting responses to antibiotics 82

Cell membranes control import and export of materials and responses to environmental signals 83

Prokaryotic cells are relatively simple in structure 83

Prokaryotic DNA 83

Prokaryotic enzymes 83

Other cell components 84

Prokaryotes reproduce primarily by binary fission 84

Many prokaryotes survive harsh conditions as tough spores 84

6.3 Prokaryotic metabolic diversity is important in nature and human affairs 85

Some prokaryotes produce or consume methane 85

Photosynthesis originated in bacteria 85

Some prokaryotes perform nitrogen fixation, important in agriculture and nature 86

Prokaryotes are useful in industry, environmental monitoring and remediation, and biotechnology 86

Essay **6.1** Legume Plant Corporations: The Business of Nitrogen Fixation 87

Highlights 88 Review Questions 89 Applying Concepts 89

Chapter 7 Eukaryotic Cells 90

7.1 Organisms are composed of one to many microscopic cells 91

7.2 Microscopes are the tools of cell biology 93

Light microscopes use glass lenses and visible light to enlarge images 93

Electron microscopes use magnetic lenses to focus beams of electrons 93

7.3 Some features of eukaryotic cells are shared with prokaryotic cells, but others are distinctive 95

Cell membranes, cytoplasm, and ribosomes occur in all cells 95

The cell membrane functions in communication and transport of materials 95

- Some cell-membrane proteins perceive environmental information* 96
- Some cell-membrane proteins transport materials into or out of cells* 96
- Selective membrane permeability is the basis for osmosis* 96
- Some plants are adapted to salty environments* 97
- Endocytosis and exocytosis also transport materials across cell membranes* 98
- Eukaryotic cells share some features that are lacking from prokaryotes 98
- Nuclei contain most of the eukaryotic cell's genetic information 99
- The endomembrane system constructs and transports cell materials 99
 - The endoplasmic reticulum* 99
 - The Golgi apparatus* 100
- The cytoskeleton and associated motor proteins generate cell movements 100
 - Cytoskeletal components* 100
 - Types of motor proteins* 101
 - Flagella* 102
- Mitochondria are major cellular sites of chemical energy transformations 102
- Peroxisomes contain protective enzymes 102

7.4 Plant cells have the general features of eukaryotic cells and additional components 103

- Cellulose-rich plant cell walls provide support and protection 104
 - Cellulose* 104
 - Noncellulose components of plant cell walls* 104
 - Primary and secondary plant cell walls* 105
- Plant cells are connected by plasmodesmata 105
- Chloroplasts are sites of photosynthesis 106
 - Starch is formed in plastids of plants and green algae* 106
 - Chromoplasts are non-green, pigmented plastids of flowers and fruits* 107
- Vacuoles play several important roles in plant cells 107

7.5 Some eukaryotic cell components originated by endosymbiosis 108

- Endosymbiosis is a stable association between a host cell and another organism that lives within it 109
- Phagocytosis is a model for the early stages of endosymbiosis 109
- Endosymbionts were transformed into mitochondria and chloroplasts 109
- The host cell provides mitochondria and plastids with most of the proteins they require 110
- Plant cell walls might also have been acquired by endosymbiosis 110

Essay **7.1** *A Paper Trail* 104

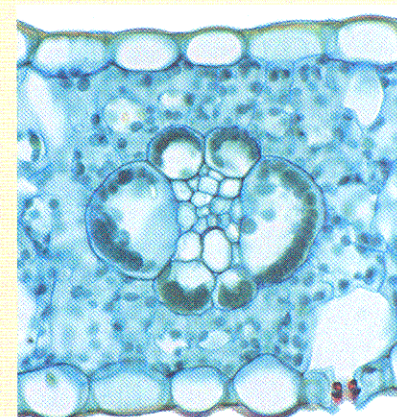
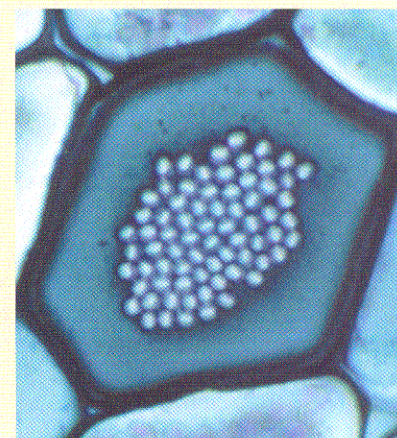
Essay **7.2** *Heavy-Metal Plants* 108

Highlights 110 Review Questions 111 Applying Concepts 111

Chapter 8 Metabolism: Photosynthesis and Respiration 112

8.1 Metabolism includes many kinds of chemical reactions 113

- In metabolism, chemical reactions are organized into pathways 114
- Chemical reactions may be exergonic or endergonic 115
- Oxidation-reduction reactions are highly important in cell metabolism 116





8.2 Photosynthesis harvests solar energy to sustain life on Earth 116

Photosynthesis changed the early Earth so that multicellular life became possible 117

Photosynthesis provides the food and fuel that power life on Earth 117

The interaction between light and pigments is crucial to solar energy capture 118

Photosynthesis occurs in the chloroplasts of algae and plants 118

Photosynthesis converts light energy into chemical energy stored in sugars 119

The light reactions capture solar energy 119

A complex electrochemical process forms ATP molecules 120

The carbon fixation reactions reduce carbon dioxide to simple sugars 121

Photorespiration makes the C_3 pathway inefficient 122

C_4 plants and CAM plants have mechanisms to reduce photorespiration 123

C_4 plants reduce photorespiration by pre-concentrating CO_2 123

CAM plants reduce photorespiration by fixing CO_2 at night 125

8.3 Respiration and fermentation release energy for cellular metabolism 126

Respiration occurs in the cytoplasm and mitochondria of cells 126

Glycolysis is the splitting of glucose into two molecules of pyruvate 127

Fermentation extracts energy from organic compounds without oxygen 127

Pyruvate is split into CO_2 and an acetyl group attached to coenzyme a 129

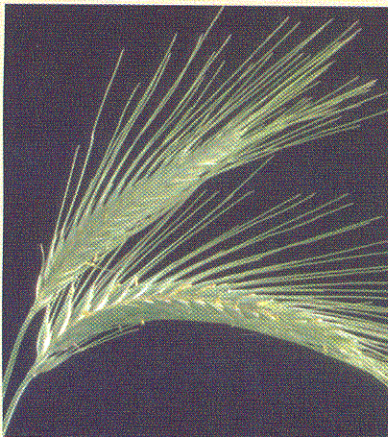
In the Krebs cycle, the acetyl group is broken into two carbon dioxide molecules 129

The electron transport chain generates a proton gradient across the inner mitochondrial membrane 130

Oxidative phosphorylation uses the energy of the proton gradient to generate ATP 131

Essay **8.1** [The Botany of Beer](#) 128

Highlights 131 Review Questions 132 Applying Concepts 133



Chapter 9 Algae, Fungi, and Lichens: Photosynthesis and Respiration in Action 134

9.1 Algae are mostly photosynthetic organisms of ecological, evolutionary, and economic importance 135

Most algae are aquatic, photosynthetic autotrophs 135

The algae include diverse groups of organisms 136

Algae have diverse body forms and habitats 138

Algae exhibit asexual and sexual reproduction 139

Algal divisions differ in photosynthetic pigments, food storage, and cell-wall composition 140

Algal food storage products 141

Algal cell walls 142

Algae have beneficial and harmful effects 142

9.2 Fungi are ecologically and economically important heterotrophs 142

Fungi form a kingdom having distinctive features 142



- Most fungal bodies are composed of hyphae 144
- Fungal nutrition is absorptive 145
- Fungi disperse by means of asexual or sexual spores 146
 - Fungal asexual reproduction* 147
 - Fungal sexual reproduction* 147
- Fungi are important in ecology and human applications 148

9.3 Lichens are composites of fungi and photosynthetic microbes 151

- Lichen evolution and diversity 151
- Lichen reproduction and development 151
- Lichen ecology 152
- Human uses of lichens 152

Essay **9.1** Killer Algae 143

Essay **9.2** Fungal Gold: Mining Truffles 149

Highlights 153 Review Questions 153 Applying Concepts 153



Chapter 10 DNA and RNA: The Molecules of Heredity 154

- 10.1** DNA is a long molecule composed of subunits called nucleotides 155
- 10.2** DNA contains two nucleotide strands that wind about each other in a double helix 157
- 10.3** DNA replicates by separating its two strands and synthesizing two new complementary strands 158
- 10.4** Stability of genetic information depends on efficient mechanisms for DNA repair 159
- 10.5** Genetic information is coded in DNA as groups of three nucleotides 160
- 10.6** Protein synthesis involves three forms of RNA in the cytoplasm 161
 - Instructions for protein synthesis coded in DNA are first transcribed into a coded mRNA molecule 161
 - The coded information in mRNA is translated into a protein at the ribosome 163
- 10.7** Differences in DNA account for differences among organisms and even among individuals 165

Essay **10.1** Molecular Detectives: DNA Fingerprinting Solves Crimes 168

Highlights 169 Review Questions 169 Applying Concepts 169



Chapter 11 Cell Division: Mitosis and Cytokinesis 172

- 11.1** Cell division and the cell cycle 173
- 11.2** Division in prokaryotes, mitochondria, and plastids occurs by binary fission 174





11.3 Eukaryotic cells have separate processes of nuclear and cytoplasmic division 176

- Preparation for cell division occurs during interphase 177
 - The G₁ phase is a period of intense synthesis of molecules and structures* 177
 - DNA replication occurs during the S phase* 178
 - The G₂ phase completes preparations for cell division* 178
- Mitosis consists of four phases 178
 - In prophase, chromosomes condense until they appear as sister chromatids* 178
 - In metaphase, chromosomes align on the equator of the mitotic spindle* 179
 - Sister chromatids separate in anaphase* 180
 - In telophase, chromosomes become indistinct* 180
- In cytokinesis, cytoplasm is divided between daughter cells 180

- Essay **11.1** Blocking Uncontrolled Cell Division: The All-Natural Cure for Cancer 174
- Essay **11.2** When to Stick and When to Split: Mechanisms of Chromosome Cohesion and Separation 182

Highlights 184 Review Questions 184 Applying Concepts 185

PART 3 PLANT STRUCTURE, DIVERSITY, AND REPRODUCTION

Chapter 12 Plant Structure, Growth, and Development 186

- 12.1 Plant bodies vary in size and structure 187**
- 12.2 Plant bodies are composed of organs, tissues, and many types of cells 188**
 - Shoots, roots, leaves, flowers, fruits, and seeds are plant organs or organ systems 188
 - Plant organs are composed of tissues whose cells are linked by plasmodesmata 189
 - Plants grow by production of new tissues and cell enlargement 191
 - Primary apical meristems produce primary tissues* 191
 - Secondary meristems produce wood and bark* 193
 - Plants also grow by cell expansion 193
 - Plant tissues are composed of one to several cell types 194
 - Specialized cells arise by the process of differentiation 196
- 12.3 Plants develop from single cells or small pieces 196**
 - Plants can develop from zygotes, spores, or excised pieces 196
 - Plant bodies have distinctive symmetry and indeterminate growth 199
- 12.4 Plant growth and development are regulated by hormones 199**

- There are several types of plant hormones 200
 - Auxins* 200
 - Cytokinins* 202
 - Ethylene* 203
 - Gibberellins* 203



Protective hormones: abscisic acid, brassinosteroids, salicylic acid, systemin, jasmonic acid, and sugars 203

12.5 Plants use pigment-containing molecules to sense their light environments 204

- Phytochrome controls seed and spore germination 204
- Phytochrome controls flowering and dormancy 205
- Plant shoots can sense shading and grow into the light 205

Essay **12.1** Supermarket Botany 190

Essay **12.2** Fighting Plant “Flu”: Controlling Plant Viruses 192

Highlights 206 Review Questions 206 Applying Concepts 207



Chapter 13 Stems 208

13.1 Stems are fundamental plant organs having multiple functions 209

13.2 The structure of conducting tissues helps explain their functions 210

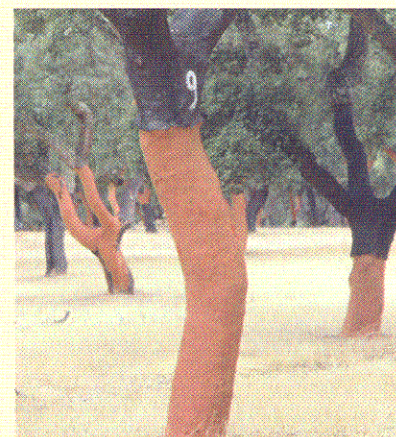
- Conducting tissues in plants occur in vascular bundles 210
- Living phloem tissues conduct organic compounds in a watery solution 210
- Phloem conducts sugars from their source to the sites of utilization 214
- Dead xylem tissues are structured to facilitate water transport 215
- Water and solutes move through stems as the result of transpiration 216
- Wood and bark arise by the activity of secondary meristems 216
 - The vascular cambium produces wood and inner bark* 217
 - The cork cambium produces a protective covering for older woody stems* 218
- Some plants can grow tall without wood 221

13.3 Humans use woody stems in many ways 221

Essay **13.1** Weird and Wonderful Stems 211

Essay **13.2** Growth Rings: Mirrors into the Past 219

Highlights 222 Review Questions 223 Applying Concepts 223



Chapter 14 Roots 224

14.1 Roots play a variety of roles in plants 225

- Roots anchor plants and absorb water and minerals 225
- Some roots are useful as human food because they store carbohydrates 226
- Roots are important sites of hormone and secondary compound production in plants 227
- The roots of some plants help support stems 227
- Pneumatophores help provide oxygen to underwater roots of some mangroves 228
- Some plants produce other types of specialized roots 228

14.2 Taproots, fibrous roots, and feeder roots are major types of underground root systems 229





14.3 Root structure and function are intimately related 230

External root structures include branch roots, root hairs, and the root tip 230

An internal view of root tissues reveals how root cells grow and specialize 231

The root apical meristem produces primary tissues 232

Root cells enlarge and begin to specialize in the zone of elongation 232

Specialized cells and tissues are present above the zone of maturation 232

Root mineral absorption is selective and requires energy 235

Root hairs and endodermal cells are sites of selective absorption 235

Plant roots require organic food and oxygen and produce carbon dioxide 237

14.4 Plant roots are associated with beneficial microbes 238

Essay **14.1** *The Root of the Matter: Human Uses of Roots* 227

Essay **14.2** *Food for Thought: Plant Mineral Nutrition* 237

Highlights 238 Review Questions 239 Applying Concepts 239



Chapter 15 Leaves 240

15.1 As photosynthetic organs, leaves occur in a vast range of forms 241

Most of the variation in leaves is in the form of the blade 242

Leaves are arranged in distinct patterns on stems 244

15.2 The major tissues of leaves are epidermis, mesophyll, xylem, and phloem 244

The epidermis provides structural support and retards water loss 244

Mesophyll is the photosynthetic tissue of leaves 246

Xylem and phloem are the conducting tissues of leaf veins 247

15.3 Plants lose large quantities of water through transpiration 247

Stomatal movements control transpiration 248

Environmental factors can affect stomatal movements 249

15.4 The cohesion-tension theory explains movement of water through plants 249

15.5 Senescence and leaf fall are a normal part of plant development 251

Autumn leaf abscission is preceded by a period of senescence 251

Leaf abscission is preceded by formation of an abscission zone 252

15.6 Leaves perform many functions in addition to photosynthesis 252

Some leaves are specialized for water or food storage 252

Leaves are modified for defense in some plants 253

Leaves capture animal prey in some plants 253

Essay **15.1** *Plant Leaves Track CO₂ Levels in the Atmosphere* 250

Highlights 255 Review Questions 255 Applying Concepts 255



Chapter 16 Reproduction, Meiosis, and Life Cycles 256

16.1 Sexual and asexual reproduction confer different advantages 257

Sexual reproduction accelerates adaptation 257

Asexual reproduction can occur rapidly 258

Many organisms that reproduce only asexually evolved from sexually reproducing ancestors 259

Many organisms reproduce by both asexual and sexual means 260

16.2 Meiosis is essential to sexual reproduction 262

Meiosis prevents buildup of chromosomes as the result of sexual reproduction over many generations 262

Meiosis contributes to genetic variability 262

16.3 Meiosis resembles mitosis in some respects, but differs in important ways 263

Meiosis follows DNA replication and uses a spindle apparatus, as does mitosis 263

Homologous chromosomes pair, then separate during meiosis I 265

Chromatids are separated during meiosis II 266

16.4 Life cycles link one generation to the next 266

Gametic life cycles are typical of animals and some algae 267

Zygotic life cycles are common among protists 267

Sporic life cycles are characteristic of land plants and some algae 268

Essay **16.1** The Perfect Date 263

Highlights 270 Review Questions 270 Applying Concepts 271

Chapter 17 Genetics and the Laws of Inheritance 272

17.1 Gregor Mendel's experiments with garden peas revealed the pattern of inheritance of genetic traits 273

Early hypotheses assumed hereditary material blended in the offspring 273

Mendel's use of garden peas had many advantages 274

Mendel's experiments focused on seven distinct traits in peas 275

The F_1 generations revealed dominant and recessive traits 275

The F_2 generations had dominant and recessive forms for each trait in a 3:1 ratio 275

Mendel's model of the pattern of inheritance 276

The testcross revealed the true nature of dominant traits 278

17.2 Mendel's model in terms of genes, alleles, and chromosomes 278

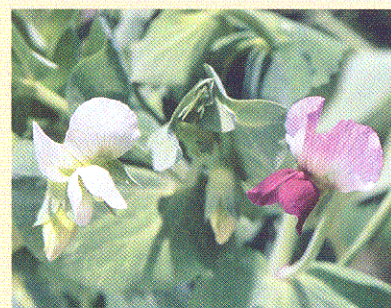
17.3 Incomplete dominance is a variation on Mendelian genetics 280

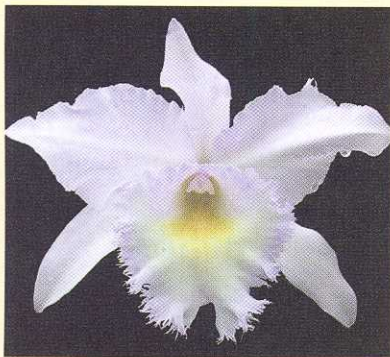
17.4 Genes on the same chromosome are linked and recombine by crossing over 281

In sweet pea the genes for flower color and pollen shape are on the same chromosome 281

Genetic maps show the order and position of genes on chromosomes 281

17.5 The environment can alter the expression of the phenotype 282





- 17.6** In a dihybrid cross, genes segregate independently if they are on separate chromosomes 283
- 17.7** Two or more genes interact to produce a trait in epistasis 284
- 17.8** In polygenic inheritance, several genes combine to affect a single trait 285

Essay **17.1** Pseudoscience and the Lysenko Affair 280

Essay **17.2** Hybrid Corn and Hybrid Orchids 286

Highlights 287 Genetics Problems 288 Review Questions 289

Chapter 18 Genetic Engineering 290

18.1 What is genetic engineering? 291

Genetic engineers use tools that are common in nature 292

Some genetic engineering tools are derived from bacteria and viruses 292

Plants contribute other molecular tools 293

18.2 Plant genetic engineering resembles crop breeding but is faster and more versatile 293

Humans have long altered the genetics of domesticated plants and animals 293

Genetic engineering overcomes some drawbacks of traditional breeding methods 293

18.3 Bacteria can be genetically engineered to produce useful materials 295

Restriction enzymes are used to prepare DNA and vectors for cloning 296

Foreign DNA is “glued” into the vector 296

Modified vectors are incorporated into bacterial cells, which are then grown to large populations 296

18.4 Plants can be genetically engineered 298

18.5 Genetic engineering has produced valued new forms of crops 299

The roots of some GM crops can more effectively obtain soil phosphate 299

Plants can be genetically modified to produce new types of starch 299

GM crops can produce antibody proteins for use in human medicine 299

18.6 Genetically engineered crops pose some concerns 300

Will genetic engineering help solve world food sufficiency problems? 300

Should foods containing genetically modified crop products be labeled? 300

Might GM crops have harmful environmental effects? 300

Evolution of resistance to pest control measures might offset the value of some GM crops 301

GM crops might have harmful effects on nonpest species 301

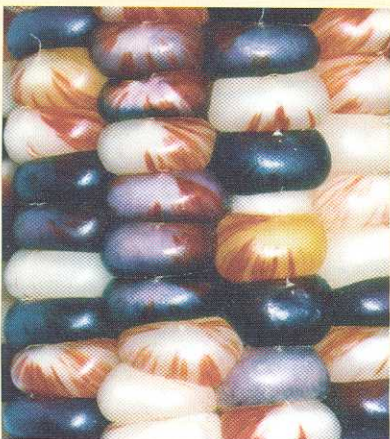
GM crops might poison the natural enemies of crop pests 301

GM crop plants might interbreed with wild relatives to form “superweeds” 301

GM crops pose other environmental concerns 301

Essay **18.1** PCR: The Gene Copier 294

Highlights 302 Review Questions 303 Applying Concepts 303



Chapter 19 Biological Evolution 304

- 19.1** Pre-Darwinian science held that species were unchanging 305
- 19.2** Some early biologists proposed that species could evolve 306
- 19.3** During the voyage of the *Beagle*, Darwin made observations that revolutionized biology 306
- 19.4** Over the next two decades, Darwin developed his theory of evolution by natural selection 307
- 19.5** The theory of evolution by natural selection can be summarized as a series of observations and conclusions 308
- 19.6** The synthetic theory of evolution combines Darwinism with genetics and molecular biology 309
- 19.7** Many areas of science provide evidence for evolution 309
- Artificial selection demonstrates that species can be modified 309
 - Comparative anatomy reveals many evolutionary relationships 309
 - Changes in proteins and DNA trace evolutionary changes 311
 - Fossils provide a record of large-scale evolutionary changes 312
- 19.8** Evolution occurs when forces change allele frequencies in the gene pool of a population 313
- Mutation provides new variation to a gene pool 313
 - Nonrandom mating alters the frequency of alleles 314
 - In small populations, genetic drift can cause alleles to be lost 314
 - Migration causes alleles to flow into or out of a population 314
 - Through natural selection, allele frequencies change in a way that populations become better adapted to their environment 315
 - Directional selection* 315
 - Stabilizing selection* 315
 - Disruptive selection* 316
- 19.9** New species originate through the development of reproductive isolation 317
- The concept of species is based on genetic isolation 317
 - Allopatric speciation requires geographic isolation 317
 - Sympatric speciation can occur when polyploidy arises in plants 318

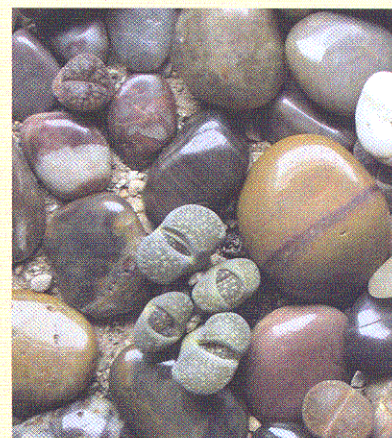
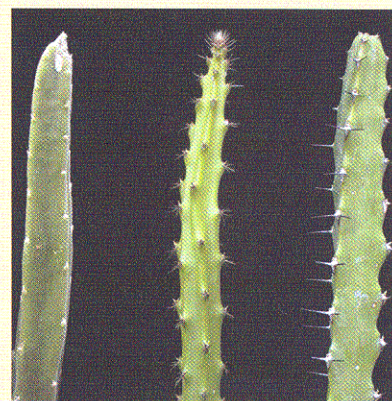
Essay **19.1** Big Beneficial Gene Changes Can Separate Species 320

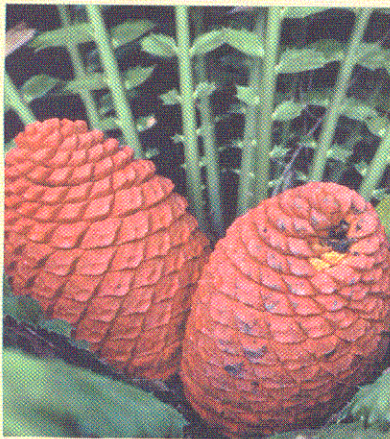
Highlights 321 Review Questions 321 Applying Concepts 321

Chapter 20 Plant Diversity: Bryophytes, Lycophytes, Pteridophytes, Gymnosperms, and Angiosperms 322

20.1 How can we define plants? 323

Plants are multicellular autotrophs that are adapted to life on land 323





Plant diversity is important in global ecology and human affairs 325

20.2 DNA and fossils help trace the history of plants 325

DNA data reveal relationships of modern plants 325

Plants evolved from charophycean green algae 325

DNA evidence reveals the order in which the modern plant groups appeared 326

Fossils reveal important events in the evolutionary history of plants 327

The origin of land-adapted plants 328

The rise of vascular plants 328

The evolution of seed plants 329

The diversification of flowering plants 329

20.3 Plant evolution illustrates the concept of descent with modification 329

The plant sporophyte probably originated by delaying zygote meiosis 330

Leaves of ferns and seed plants probably arose from branched stem systems 330

20.4 Modern land plant groups include bryophytes, lycophytes, pteridophytes, gymnosperms, and angiosperms 331

Bryophytes are the earliest-divergent modern land plants 331

Bryophyte bodies are simpler than those of vascular plants 331

Bryophytes reproduce by wind-dispersed spores, breakage, or asexual structures 331

Lycophytes and pteridophytes are modern phyla of seedless vascular plants 334

Lycophytes have simple leaves 335

Pteridophyte (fern) leaves have branched vascular systems 336

Lycophyte and pteridophyte reproduction illustrates early steps toward seed evolution 336

Gymnosperms are the earliest-divergent modern seed plants 337

Angiosperms are the most recent group of plants 339

Essay **20.1** *Magnificent Mosses* 326

Highlights 343 Review Questions 343 Applying Concepts 343

Chapter 21 Angiosperm Diversity and Reproduction 344

21.1 Flowering plants comprise an enormous number and diversity of species 345

21.2 The parts of flowers are arranged in whorls 346

Flowers vary greatly in the numbers, positions, and arrangements of parts 348

Flowers have evolved many different types of inflorescence for pollination 349

21.3 The angiosperm life cycle involves an alternation of generations 350

Double fertilization produces a zygote and an endosperm 351

Apomixis produces seeds without fertilization 353

21.4 A fruit is a mature ovary containing seeds 355

Simple fruits are the most common type 355

Complex fruits develop from multiple pistils or multiple flowers 357

21.5 Seed germination and the formation of the adult plant 357

Germination requirements are closely linked to the environment 357

After germination, plants follow various patterns of development 357

Essay **21.1** The ABCs of Floral Organ Development 350

Highlights 358 Review Questions 359 Applying Concepts 359

Chapter 22 Flowering Plant and Animal Coevolution: Pollination and Seed Dispersal 360

22.1 Coevolutionary interactions between flowering plants and animals are common and important in nature and human affairs 361

Flowering plant-animal coevolutionary interactions are important in agriculture 362

Coevolution is important in global ecology 362

22.2 Cross-pollination is the transfer of pollen from one flower to another of the same species 362

Outbreeding provides greater genetic variability than inbreeding 363

Animal pollinators offer precision, high-fidelity pollination services 364

Plant food rewards to animal pollinators include nectar, pollen, and oil 365

Plants attract pollinators by flower scent and color 365

Flowers control pollinator access by flower shapes and positions 366

Animal pollinators can learn to recognize the features of favored flowers 367

Flowers and pollinators have coordinated traits known as pollination syndromes 367

Beetles and beetle-pollinated flowers 367

Bees and bee-pollinated flowers 368

Nectar-feeding flies, carrion flies, and fly-pollinated flowers 369

Butterflies, moths, and coevolved flowers 370

Birds and bird-pollinated flowers 371

Bats and bat-pollinated flowers 372

22.3 Plants have also coevolved with animals to accomplish seed dispersal 373

Essay **22.1** Pollination by Wind and Water 364

Highlights 374 Review Questions 375 Applying Concepts 375

PART 4 PLANT DIVERSITY AND THE ENVIRONMENT

Chapter 23 Principles of Ecology and the Biosphere 376

23.1 Ecology focuses on populations, communities, ecosystems, biomes, and the biosphere 377

23.2 Populations grow and decline, occupy specific niches, and interact with other populations 378

Populations show distinct patterns of growth 378

The ecological niche includes the abiotic factors that determine the area
the population occupies 379

The ecological niche includes interactions between populations of different species 380

In mutualism, two populations exchange benefits 380





In parasitism, herbivory, and predation, one population benefits and the other is harmed 380

In competition, individual organisms have a negative impact on each other 381

23.3 Communities are composed of individuals of many different species 382

Communities can be characterized by their species diversity 382

Ecological succession is the change in community composition over time 382

Primary succession begins on areas not previously occupied by organisms 384

Secondary succession occurs on areas where a community has been removed 384

23.4 Ecosystem studies focus on trophic structure and energy flow 384

Organisms may be grouped into functional categories 386

The flow of energy through a food chain is linear 386

Only a small fraction of energy passes between trophic levels 386

23.5 Global climatic patterns determine the distribution of biomes 388

The distribution of biomes is primarily determined by global patterns of atmospheric circulation 388

Continentality, ocean currents, and mountain ranges also affect the distribution of biomes 390

23.6 Matter moves between biomes and the physical environment in large-scale biogeochemical cycles 391

Water cycles through the oceans, atmosphere, lands, and organisms 391

Microorganisms largely control the nitrogen cycle 391

Carbon dioxide cycles between the atmosphere and the biosphere 393

Essay **23.1** *Determining Past Climate and Vegetation from Pollen Data* 385

Highlights 395 Review Questions 396 Applying Concepts 397



Chapter 24 Polar Deserts, Tundra, and Taiga 398

24.1 Polar and alpine biomes have arisen since the retreat of the last glaciation 399

24.2 Antarctica contains the most severe climates among polar biomes on Earth 400

The continental Antarctic contains only sparse populations of mosses, lichens, and algae 401

In the maritime Antarctic, bryophytes and lichens are dominant 402

24.3 Tundra can be characterized by the absence of trees 402

Tundra plants show a number of adaptations in form and function 404

Tundra plants show a number of reproductive adaptations 406

24.4 The taiga is dominated by coniferous trees 406

24.5 Alpine tundra and montane coniferous forest are southern extensions of arctic tundra and taiga 407

Alpine tundra and arctic tundra have many species in common 408

Dominant conifer species differ among mountain ranges 408



24.6 Humans affect polar and alpine biomes at local, regional, and global scales 409

Mining, logging, grazing, and recreation affect polar and alpine biomes at the local and regional scales 409
 Global environmental changes are affecting polar and alpine biomes 410

Essay **24.1 Building Biomes on Mars 403**

Highlights 410 Review Questions 411 Applying Concepts 411

Chapter 25 Freshwaters, Wetlands, and Water Quality 412

25.1 Freshwaters and wetlands are essential to humans and wildlife 413

People depend on freshwaters and wetlands for clean water, energy supplies, and other services 413
 Freshwaters and wetlands are also essential to the survival of wildlife and sustainability of natural ecosystems 413

25.2 A focus on lakes: seasonal changes, habitats, and primary producers 414

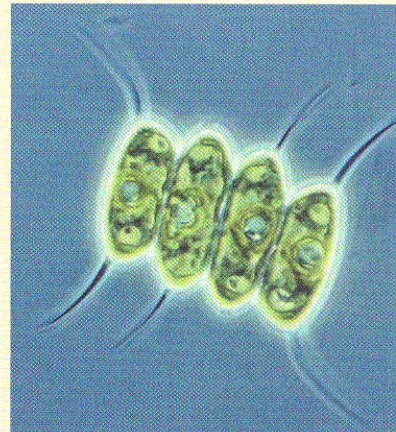
Lakes contain three major types of habitats and communities 414
 Mineral nutrient availability in temperate lakes varies with seasonal temperature change 414
 Spring 415
 Summer 415
 Fall 415
 Winter 415
 Freshwater algae and plants are adapted to aquatic habitats 415
 Algae 416
 Floating plants 416
 Rooted macrophytes 417

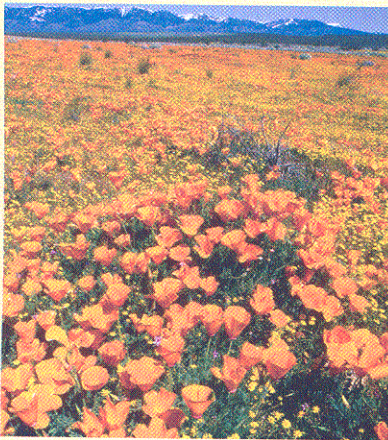
25.3 Human activities have degraded freshwaters 418

Oligotrophic freshwaters are low in nutrients and productivity, but high in species diversity 418
 Eutrophic freshwaters are high in nutrients and productivity, but low in species diversity 419
 Phosphorous availability controls growth of freshwater plants, algae, and cyanobacteria 420
 Lake and stream eutrophication can be prevented or reversed 420

25.4 A focus on wetlands 421

Common freshwater wetlands include riparian wetlands, deep-water swamps, marshes, acid bogs, and sedge meadows 421
 Wetlands play important roles in global carbon cycling 421
 Wetland plants are adapted in ways that help them overcome stresses of wetland habitats 422
 Humans have destroyed many of the world's wetlands 425
 Wetland delineation, invasive species, and restoration are issues in wetland protection and restoration 426





Essay **25.1** Gardens of the Sea: Salt Marshes and Sea-Grass Beds 416

Highlights 426 Review Questions 427 Applying Concepts 427

Chapter 26 Deserts and Desertification 428

26.1 Four physical phenomena determine the occurrence of deserts 429

Hadley cells generate subtropical high-pressure zones 430

Continentalism may generate desert conditions 430

Cold ocean currents intensify the aridity of coastal deserts 430

Deserts form in the rain shadows of mountain ranges 430

26.2 Modern deserts are of relatively recent origin 431

26.3 Desert plants have adapted to acquire water 431

Plants using the deepwater table must put down long roots 431

A great variety of desert plants use surface water 432

Desert algae, mosses, and lichens are tolerant of high temperatures 432

Desert annuals and herbaceous perennials grow when water is available 433

Deciduous perennials maintain significant aboveground biomass 433

26.4 Desert succulents may have thick leaves or thick stems 434

Succulents conserve water by a low surface-to-volume ratio and CAM metabolism 435

Much of the volume of succulents is available for water storage 435

Cacti are extremely tolerant of high temperatures 435

Water uptake in desert succulents may be very rapid 435

Stem succulents come in a wide range of forms 436

Leaf succulents include the agaves, aloes, and stone plants 437

26.5 Human impacts on deserts include mining, desertification, depletion of aquifers, and urban sprawl 439

Essay **26.1** A Bountiful Harvest for the Desert 439

Highlights 440 Review Questions 441 Applying Concepts 441

Chapter 27 Grasslands 442

27.1 Grasslands are ecologically, evolutionarily, and economically important 443

Grasslands occupy large areas of the world's land surface and support high animal populations 443

Grasslands store vast amounts of organic carbon in their soils 444

Grasslands support the world's most productive agriculture 445

Grasslands have had a major impact on the evolution of grazer animals and humans 446

27.2 Climate, fire, and herbivores shape grassland environments 446

Grassland climate is drier and more extreme than that of most forests 446

Fire plays an important role in maintaining grasslands 446

Large animal grazers also influence grassland environments 447

27.3 Grassland plants are adapted to cope with environmental stresses 448

Dominant grass species vary through the year and by region 448

Grass bodies are adapted for fast growth, high productivity, and resistance to fire and grazing 448

Grass flowers and fruits are adapted for efficient reproduction 449

Grass flowers 449

Grass fruits 450

Forbs are diverse grassland plants that are neither grasses, trees, nor shrubs 451

Grassland trees and shrubs are adapted to survive fire and provide important resources for some grazers 452

27.4 Grassland improvement, restoration, and preservation yield benefits for people 452

Dry grasslands can degrade into deserts 453

Mesic grasslands have mostly been transformed into farmlands 453

Wet grasslands provide valuable ecological services 453

Essay **27.1** *Looking into the Crystal Ball: Grasslands and Our Future* 444

Essay **27.2** *Restoring Prairies* 447

Highlights 455 Review Questions 455 Applying Concepts 455



Chapter 28 Temperate Deciduous Forests and Chaparral 456

28.1 Chaparral is a biome with hot, dry summers and cool, wet winters 458

Evergreen shrubs with sclerophyllous leaves dominate the chaparral 458

Fire is a major ecological force in the chaparral 460

Some shrubs require fire to establish new seedlings 460

Other shrubs require an absence of fire to establish seedlings 460

Trees in the chaparral are adapted to survive wildfires 460

Human impact has been severe on mediterranean scrub ecosystems 461

28.2 Temperate deciduous forests are a biome with seasonality and abundant precipitation 461

Eight genera of trees define the eastern temperate deciduous forest 462

Plants in the temperate deciduous forest are adapted to cold winters and competition for light 463

Humans have had a major impact on many features of the eastern temperate deciduous forest 465

Many exotic species have invaded the temperate deciduous forest 465

Plant rustling from national forests is becoming a serious problem 466

Research at Hubbard Brook was undertaken to determine how temperate forest ecosystems function 466

Acid rain is damaging the eastern temperate deciduous forest 468

Essay **28.1** *Native American Uses of Temperate Forest Plants* 466

Highlights 470 Review Questions 471 Applying Concepts 471





Chapter 29 Tropical Rain Forests 472

29.1 Tropical rain forests are valued for high biotic diversity and climate effects 473

Great age, rapid evolution, and complex structure foster high biodiversity 473

Tropical rain forests store much of the Earth's carbon 474

Tropical rain forests play an important role in global water cycling 474

29.2 Tropical forest vegetation is distinctive 475

Tropical forests are tall, evergreen, and layered 475

Tropical forests are richer in tree species than are other forests 475

Tropical forests contain plant forms that are rare elsewhere 475

Tropical rain forests are among the most productive ecosystems on Earth 475

29.3 Warm, moist tropical climates favor lush plant growth 477

Tropical plants compete for light 478

Some tropical plants are adapted to drought 478

Heavy rainfall and high winds can damage tropical plants 478

29.4 Paradoxically, lush rain forests grow on poor soils 479

Tropical forest soils are low in nutrients and organic materials 479

Tropical forest mineral nutrients are held within tissues of living organisms 479

Nitrogen-fixing bacteria and mycorrhizal fungi help tropical rain forest plants cope with poor soil 479

Ancient tropical forest farmers learned to cope with poor soils 480

Temperate-style agriculture is often difficult to practice in the tropics 480

29.5 Tropical forest plants are adapted to cope with environmental stresses 481

Canopy trees are well adapted to intercept light, but are vulnerable to fire and forest fragmentation 481

Tropical tree stem architecture is amazingly diverse 481

Buttress roots provide structural support 481

Leaves of tropical trees are surprisingly uniform in shape 481

Tree reproduction is adapted to forest conditions 482

Lianas' growth and reproduction reflects their clinging lifestyle 484

Essay **29.1** Fascinating Orchids 477

Essay **29.2** Restoring a Lost Forest 482

Highlights 484 Review Questions 485 Applying Concepts 485

Chapter 30 Plants and Human Sustainability 486

30.1 Sustainability is the maintenance of humans together with healthy environments 487

How many people can Earth sustain? 488

Human population growth is correlated with environmental degradation 489

30.2 Earth's biodiversity provides essential environmental benefits, but is vulnerable 489

High biodiversity is essential for the maintenance of ecological services 490

Modern extinction rates rival those following past catastrophic disasters 490

Habitat fragmentation reduces biodiversity 490

Biodiversity “hotspots” are regions with high endemism that experience environmental impact 490

Biomes differ in extinction vulnerability 491

Nonnative, invasive species threaten natural ecosystems 492

Putting a “price tag” on nature helps people make decisions about relative values of ecosystem uses 493

30.3 Can human technology and expertise save the day? 493

Agricultural technologies can improve energy security 493

Innovative technologies may improve energy sustainability 493

Ecological knowledge provides the basis for restoring degraded ecosystems 495

Everyone can contribute to global sustainability 495

Essay **30.1** How Habitat Fragmentation Causes Extinction 491

Essay **30.2** Sustainable Use of Neotropical Forests 494

Highlights 496 Review Questions 496 Applying Concepts 497

Appendix I Metric System Conversions AP-1

Appendix II Geological Time Scale AP-3

Answers A-1

Glossary G-1

Photo Credits PC-1

Index I-1

